



New Redesigned Fruit Texture Analyser (F.T.A.)

Pressure Testing

The Fruit Texture Analyser (FTA) measures fruit firmness at the push of a button and captures the results to a PC. Tests are conducted at standard depths and speeds of penetration, ensuring accurate and repeatable results.

- ✓ Record your results to PC
- ✓ Easy clean body
- ✓ Smooth operation with central loadcell shaft
- ✓ Ranked as the best fruit testing instrument by Washington State University
- ✓ 2 models available

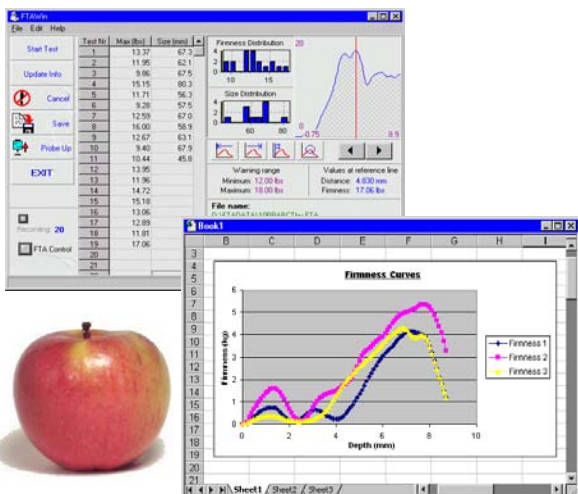


Features and Benefits

- ◆ The FTA can be controlled with your own software, The control function can be accessed through a DLL file. Integrating the FTA with existing QA software systems should not take longer than 2 hours of programming.
- ◆ Software can be configured to allow for customised output data and enables the data to be incorporated into existing quality control systems.
- ◆ Electronic speed control ensures accurate probe speed and also ensures that tests are carried out under standard conditions.
- ◆ The FTA connects to a standard PC and software-runs on Windows 98/NT4/ME/2000/XP and latest Windows **VISTA**
- ◆ All operating parameters can be regulated via the control PC (probe speed calibration, threshold, depth).
- ◆ The motorized system eliminates operator discrepancies and ensures accurate test distance (depth).
- ◆ Software to generate reports from recorded data is included in the package.
- ◆ Electronic measure system ensures accurate, reliable firmness readings.
- ◆ Measuring units: Firmness: kg, pounds, Newton – Depth: millimetre, inch.
- ◆ The FTA requires minimum maintenance - only cleaning to remove juice.
- ◆ The FTA can directly be accessed from Excel, Word or Access.
- ◆ Can be used without a PC by attaching the optional keypad.
- ◆ Installation only takes a few minutes.



Test: apples, pears, avocados, peaches, nectarines, kiwi fruit



SPECIFICATIONS

Item	FTA GS15	FTA GS25
Capacity:	15kg	25kg
Speed of Probe:	1-40 mm/sec	1-40 mm/sec
Operating Range:	50-15,000g	50-25,000g
Maximum Fruit Size:	120mm	120mm
Weight:	9kg (approx)	9kg (approx)
Power Consumption:	50 watt (I)	50 watt (I)
Attachments:	Optional	Optional
Supply Voltage:	100 or 240 VAC	100 or 240 VAC
USB	Yes	Yes
Price:	£3,145.40	£3,495.00

(I) Under max load

Fruit Texture Analyser (F.T.A.)

Attachments Available



LCD/Keypad

With the LCD/Keypad attached the FTA can be operated without a connection to a PC. All the relevant measurements – firmness, size, minimum, maximum, average etc., will be displayed in the LCD.

Code: **FTA03**

Price: **£224.22**



EFM - Electronic Fruit Size Measure

The EFM can be connected to the FTA to measure fruit diameter electronically. Each measured size will be immediately available on the computer. Fruit diameter from 12mm to 100mm can be measured.

Code: **FTA04**

Price: **£206.04**



Scale

A scale attachment can also be connected to the FTA to measure fruit weight electronically. The scale is available in capacities ranging from 3kg to 35kg.

Code: **FTA05**

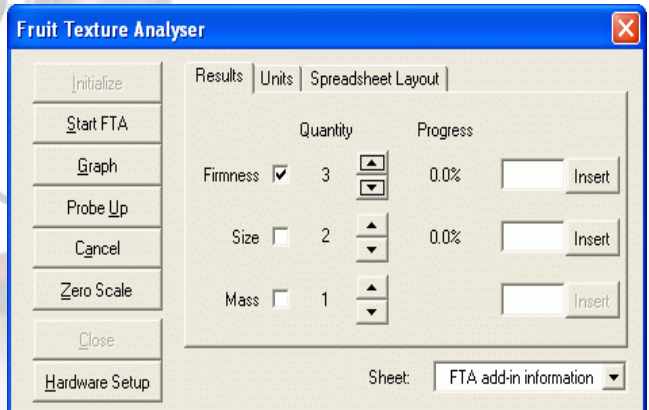
Price: **£347.44**



FTA data can be captured directly from MS Excel, MS Word or MS Access
For example, here's how it will work from MS Excel:

Fig. 2

The image shows two screenshots of Microsoft Excel. The top screenshot shows a spreadsheet with data organized into columns for different batches (Batch A, B, C) and rows for various measurements (Firmness, Size, Mass, Max, Min, Ave). The bottom screenshot shows a similar spreadsheet but with data organized into rows for different batches (Batch A, B, C, D, E) and columns for various measurements (Firmness, Size, Mass, Max, Min, Ave).



While in Excel, the user simply presses **Ctrl + R** and a connection with the FTA is established. A dialog box (fig. 1.) opens and allows the user to configure how the data should be transferred to the Excel work sheet. Firmness, size and mass measurements can be placed in two types of matrixes as shown in fig.2. The spacing between each reading or group of readings can be configured. Other settings such as number of readings and units are also saved automatically.

Note:
The keypad, EFM (size measure) and scales are optional attachments.

ACE offers, full service, calibration and repairs. It is advisable to calibrate your FTA on an annual basis.